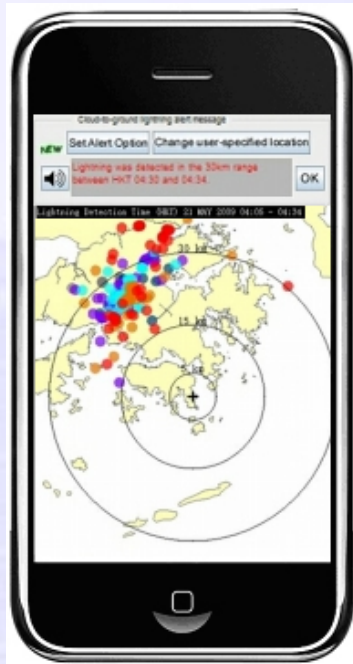
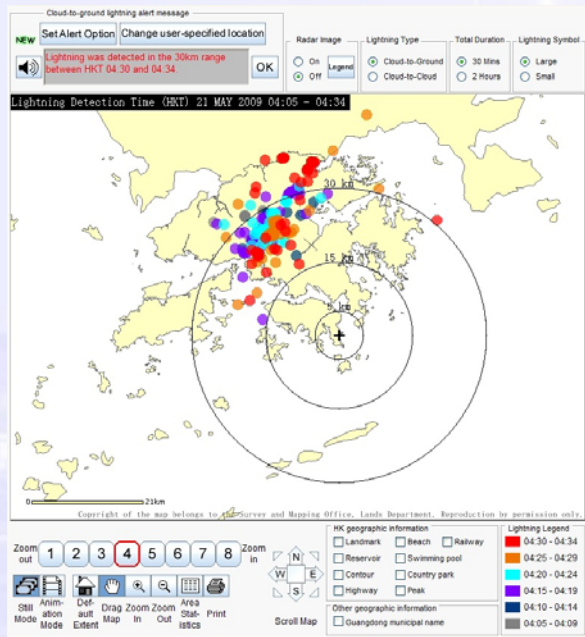


Location-specific Lightning Alert Service User Guide

What is “Location-specific Lightning Alert Service”?

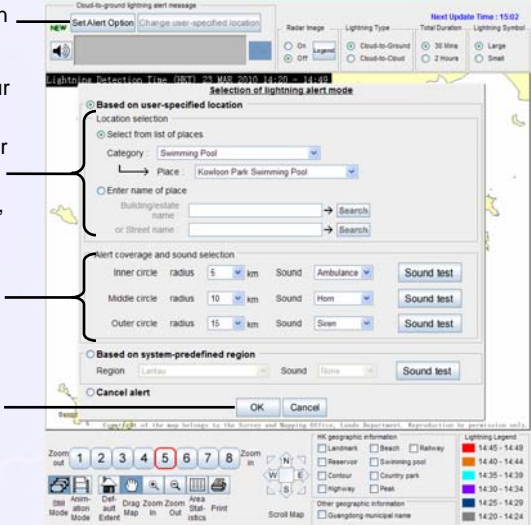
This is a free online service provided by the Hong Kong Observatory. Users can select their location of interest as well as a maximum of three alert circles of different sizes in the Location-specific Lightning Alert webpage. Alert messages will be automatically generated when lightning is detected within the specified ranges. Through the use of internet-capable computer or mobile phone, users can access instant lightning information anywhere, anytime.



How to specify your location of interest and alert circles?

It is easy to use the lightning alert webpage. Users can specify their location of interest and select their alert circles on the webpage (http://www.hko.gov.hk/wxinfo/llis/alert_index.htm) as illustrated below:

- Click the **Set Alert Option** button to open the selection menu.
- In the pop-up window, specify your location of interest by:
 - choosing from the list of popular places; or
 - entering the name of a building, estate or street
- Select up to 3 alert circles ranging from 5 to 50 km and the associated alert tones.
- Click the **OK** button.



The lightning alert webpage will be updated automatically. When lightning is detected within the specified ranges, users will be alerted with alert message and sound through their computer or mobile phone.

Advice to managers of outdoor activity venues

The lightning alert service is most useful to outdoor workers or people engaging in outdoor activities. The service could help determine the proximity from the place of their outdoor activity. Managers of outdoor facilities, such as sports grounds, football fields, beaches or swimming pools, are advised to preset alert ranges in the lightning alert webpage. When an alert message is received, the officer on duty should be vigilant of the situation. Since the development, movement and dissipation of thunderstorms vary under different weather situations, the duty officer should take into account such information as the proximity of the lightning location, the thunderstorm warning issued by the Observatory and the change in sky condition, etc, before deciding whether to close the facility and/or provide appropriate guidance to users. For instance, isolated thunderstorms may develop over parts of the New Territories due to intense sunshine during summer. Usually, these thunderstorms are short-lived and affect only a small region. Under such a circumstance, outdoor activities may continue in places far away from the thunderstorms, such as the urban areas in this case. However, the manager on duty should keep a close watch on the development and movement of the thunderstorms.